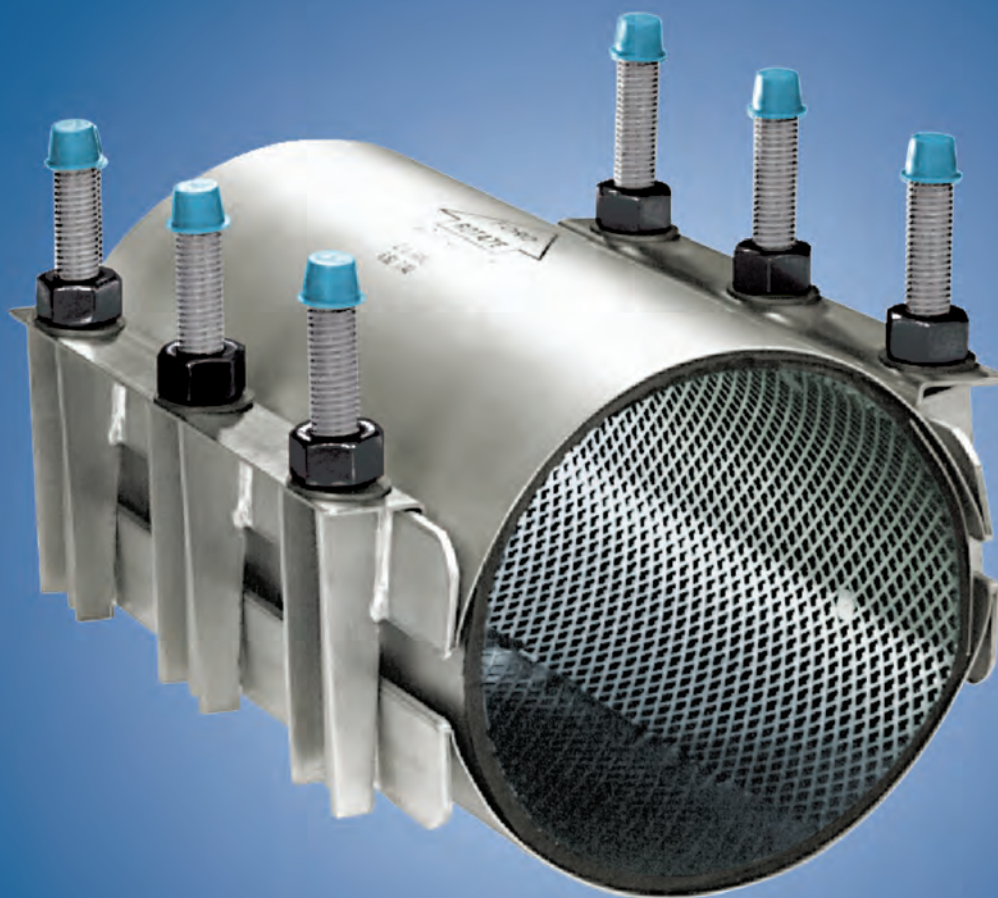


FORD METER BOX OFFERS A WIDE RANGE OF REPAIR CLAMPS ...



FOR YOUR **WIDE** RANGE NEEDS!



The Ford Meter Box Co., Inc. 775 Manchester Avenue, P.O. Box 443, Wabash, Indiana, USA 46992-0443
Telephone: 260-563-3171 FAX: 800-826-3487 Overseas FAX: 260-563-0167 <http://www.fordmeterbox.com>

FWRRC 08/2010

TODAY'S REPAIR CLAMP FOCUS IS "WIDE RANGE."
FORD'S REPAIR CLAMPS OFFER OPERATING RANGES AS GREAT AS 1.20"

- Double section F2 and FS2 clamps operating range .80"
- Triple section F3 and FS3 clamps operating range - 1.20" (four and five section clamps are also available)

FS2 REPAIR CLAMP
 All Stainless Steel Construction
 .80" OPERATING RANGE



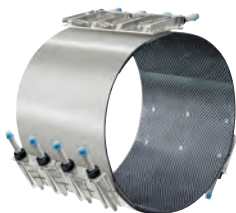
NOM. PIPE SIZE	PIPE O.D. RANGE	CATALOG NUMBER	LENGTH						
			7.5"	10"	12.5"	15"	20"	24"	30"
4"	4.44-5.24	FS2-524xLength	√	√	√	√	√	√	N/A
	4.74-5.57	FS2-557xLength							
6"	6.62-7.42	FS2-742xLength	√	√	√	√	√	√	√
	6.84-7.64	FS2-764xLength							
8"	8.62-9.42	FS2-942xLength	√	√	√	√	√	√	√
	8.99-9.79	FS2-979xLength							
10"	10.70-11.50	FS2-1150xLength	N/A	√	√	√	√	√	√
	11.04-11.84	FS2-1184xLength							
	11.60-12.40	FS2-1240xLength							
12"	12.70-13.50	FS2-1350xLength	N/A	√	√	√	√	√	√
	13.14-13.94	FS2-1394xLength							
	13.65-14.45	FS2-1445xLength							
14"	15.07-15.82	FS2-1582xLength	N/A	√	√	√	√	√	√
16"	17.15-17.90	FS2-1790xLength	N/A	√	√	√	√	√	√

F2 REPAIR CLAMP
 Ductile Iron Lug Construction
 .80" OPERATING RANGE



NOM. PIPE SIZE	PIPE O.D. RANGE	CATALOG NUMBER	LENGTH					
			7.5"	10"	12.5"	15"	20"	30"
4"	4.44-5.24	F2-524xLength	√	√	√	√	√	√
	4.74-5.57	F2-557xLength						
4" Special	4.45-5.60	F2W-560xLength						
6"	6.62-7.42	F2-742xLength	√	√	√	√	√	√
	6.84-7.64	F2-764xLength						
8"	8.62-9.42	F2-942xLength	√	√	√	√	√	√
	8.99-9.79	F2-979xLength						
10"	10.70-11.50	F2-1150xLength	√	√	√	√	√	√
	10.72-11.72	F2-1172xLength						
	11.04-11.84	F2-1184xLength						
	11.60-12.40	F2-1240xLength						
10" Special	11.04-12.24	F2-1224xLength	N/A	√	N/A	√	√	√
12"	12.70-13.50	F2-1350xLength	√	√	√	√	√	√
	12.72-13.92	F2-1392xLength						
	13.14-13.94	F2-1394xLength						
12" Special	13.14-14.34	F2-1434xLength	N/A	√	N/A	√	√	√
	13.65-14.65	F2-1465xLength	N/A	√	N/A	√	√	√
Range	14.38-15.13	F2-1513xLength	N/A	√	N/A	√	√	√
	15.07-15.82	F2-1582xLength	N/A	√	N/A	√	√	√
	15.20-16.20	F2-1620xLength	N/A	√	N/A	√	√	√
	15.92-16.67	F2-1667xLength	N/A	√	N/A	√	√	√
	16.00-17.00	F2-1700xLength	N/A	√	N/A	√	√	√
	16.56-17.31	F2-1731xLength	N/A	√	N/A	√	√	√
	17.15-17.90	F2-1790xLength	N/A	√	N/A	√	√	√
	17.20-18.20	F2-1820xLength	N/A	√	N/A	√	√	√
	17.82-18.57	F2-1857xLength	N/A	√	N/A	√	√	√
	18.46-19.21	F2-1921xLength	N/A	√	N/A	√	√	√
	18.40-19.40	F2-1940xLength	N/A	√	N/A	√	√	√
	19.23-19.98	F2-1998xLength	N/A	√	N/A	√	√	√
	19.40-20.40	F2-2040xLength	N/A	√	N/A	√	√	√
	19.90-20.65	F2-2065xLength	N/A	√	N/A	√	√	√
	20.40-21.40	F2-2140xLength	N/A	√	N/A	√	√	√
	20.70-21.45	F2-2145xLength	N/A	√	N/A	√	√	√
	21.52-22.27	F2-2227xLength	N/A	√	N/A	√	√	√
	21.40-22.40	F2-2240xLength	N/A	√	N/A	√	√	√
	22.12-22.87	F2-2287xLength	N/A	√	N/A	√	√	√
	22.50-23.60	F2-2360xLength	N/A	√	N/A	√	√	√
22.90-23.65	F2-2365xLength	N/A	√	N/A	√	√	√	

FS3 & F3 REPAIR CLAMP
 FS3 All Stainless Steel Construction
 F3 Ductile Iron Lug Construction
 1.20" OPERATING RANGE



NOM. PIPE SIZE	PIPE O.D. RANGE	CATALOG NUMBER	LENGTH				
			12.5"	15"	20"	24"	30"
16"	17.10-18.30	FS3-1830xLength	√	√	√	√	√
18"	18.00-19.20	FS3-1920xLength	√	√	√	√	√
	19.50-20.70	FS3-2070xLength					
20"	21.60-22.80	FS3-2280xLength	√	√	√	√	√
24"	25.80-27.00	FS3-2700xLength	√	√	√	√	√

NOM. PIPE SIZE	PIPE O.D. RANGE	CATALOG NUMBER	LENGTH			
			10"	15"	20"	30"
Range	23.18-24.38	F3-2438xLength	√	√	√	√
	24.28-25.48	F3-2548xLength	√	√	√	√
	25.60-26.80	F3-2680xLength	√	√	√	√
	26.38-27.58	F3-2758xLength	√	√	√	√
	27.55-28.75	F3-2875xLength	√	√	√	√
	28.63-29.83	F3-2983xLength	√	√	√	√
	29.52-30.72	F3-3072xLength	√	√	√	√

