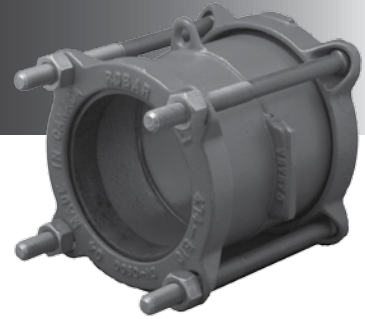




# 1408 / 1406

## CAST DUCTILE IRON COUPLING



### APPLICATIONS:

ROBAR **1408 / 1406** Straight and Transition Couplings are used to make a non-restrained connection between two pipes of the same nominal size with same or different ODs. The **1406** is supplied with Stainless Steel fasteners.

### MATERIAL SPECIFICATIONS:

Center Sleeve: Cast Ductile Iron.  
 End Rings: Cast Ductile Iron.  
 Gaskets: SBR (Buna S) Rubber.  
 Other compounds available.  
 Fasteners: **1408** - 5/8" NC HSLA Steel.  
**1406** - 5/8" NC T304 Stainless Steel.  
 Nuts coated with anti-galling compound.  
 Torque is 70-80 ft. lbs.  
 Coating: Two coats of Enamel.

### HOW TO ORDER:

Determine the product number (**1406, etc.**) and the pipe OD or end plate combination for each end of the coupling (see page 1.1.1, 1.1.2), and then use the appropriate ordering code as shown in the following example.

To couple a 6" Steel pipe (6.63" OD) to a 6" C900 PVC pipe (6.90" OD), using SS Bolts the ordering code is:

**1406** - 6.63" x 6.90" i.e. **1406 - 6.63 x 6.90**  
 product OD (Actual) OD (Actual) or **1406 - 6 D3 x A1**  
 number



# 1408R / 1406R

## CAST DUCTILE IRON REDUCING COUPLING



### APPLICATIONS:

ROBAR **1408R / 1406R** Reducing Couplings are used to make a non-restrained connection between two pipes of different nominal sizes. The **1406R** is supplied with Stainless Steel fasteners.

### MATERIAL SPECIFICATIONS:

Center Sleeve: Cast Ductile Iron.  
 End Rings: Cast Ductile Iron.  
 Gaskets: SBR (Buna S) Rubber.  
 Other compounds available.  
 Fasteners: **1408R** - 5/8" NC HSLA Steel.  
**1406R** - 5/8" NC T304 Stainless Steel.  
 Nuts coated with anti-galling compound.  
 Torque is 70-80 ft. lbs.  
 Coating: Two coats of Enamel.

### HOW TO ORDER:

Determine the product number (**1406R, etc.**) and pipe OD or end plate combination for each end of the coupling (see page 1.2.1, 1.2.2), and then use the appropriate ordering code as shown in the following example.

To couple an 8" Ductile Iron pipe (9.05" OD) to a 6" C900 PVC pipe (6.90" OD) using SS Bolts, the ordering code is:

**1406R** - 9.05" x 6.90" i.e. **1406R - 9.05 x 6.90**  
 product OD (Actual) OD (Actual) or **1406R - 8A1 x 6A1**  
 number

### CAUTION



Couplings do not prevent pipe pullout.  
 Suitable restraint should be used when required.

### ROBAR INDUSTRIES LTD.

Surrey, British Columbia  
 Phone: 1-800-663-6553

Saint-Bruno, Quebec  
 Phone: 1-800-315-9525

Website: [www.robarindustries.com](http://www.robarindustries.com) / E-mail: [waterworks@robarindustries.com](mailto:waterworks@robarindustries.com)